



ZNF262 Polyclonal Antibody

Catalog No	YP-Ab-02181
Isotype	IgG
Reactivity	Human;Mouse
Applications	WB;IHC;IF;ELISA
Gene Name	ZMYM4
Protein Name	Zinc finger MYM-type protein 4
Immunogen	The antiserum was produced against synthesized peptide derived from human ZMYM4. AA range:801-850
Specificity	ZNF262 Polyclonal Antibody detects endogenous levels of ZNF262 protein.
Formulation	Liquid in PBS containing 50% glycerol, 0.5% BSA and 0.02% sodium azide.
Source	Polyclonal, Rabbit,IgG
Purification	The antibody was affinity-purified from rabbit antiserum by affinity-chromatography using epitope-specific immunogen.
Dilution	WB: 1/500 - 1/2000. IHC: 1/100 - 1/300. ELISA: 1/10000.. IF 1:50-200
Concentration	1 mg/ml
Purity	≥90%
Storage Stability	-20°C/1 year
Synonyms	ZMYM4; KIAA0425; ZNF262; Zinc finger MYM-type protein 4; Zinc finger protein 262
Observed Band	175kD
Cell Pathway	nucleoplasm,cytoplasm,
Tissue Specificity	Expressed at higher level in heart, skeletal muscle, kidney and liver.
Function	miscellaneous:The 3'-UTR region of the mRNA encoding this protein contains a motif called CDIR (for cell death inhibiting RNA) that binds HNRPD/AUF1 and HSPB1/HSP27. It is able to inhibit interferon-gamma induced apoptosis.,PTM:Phosphorylated upon DNA damage, probably by ATM or ATR.,similarity:Contains 9 MYM-type zinc fingers.,tissue specificity:Expressed at higher level in heart, skeletal muscle, kidney and liver.,
Background	miscellaneous:The 3'-UTR region of the mRNA encoding this protein contains a motif called CDIR (for cell death inhibiting RNA) that binds HNRPD/AUF1 and HSPB1/HSP27. It is able to inhibit interferon-gamma induced apoptosis.,PTM:Phosphorylated upon DNA damage, probably by ATM or ATR.,similarity:Contains 9 MYM-type zinc fingers.,tissue specificity:Expressed at higher level in heart, skeletal muscle, kidney and liver.,



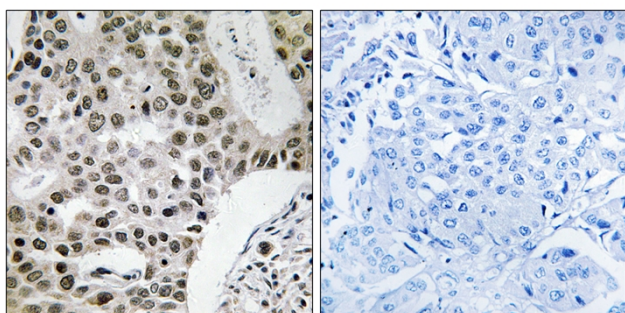
matters needing attention

Avoid repeated freezing and thawing!

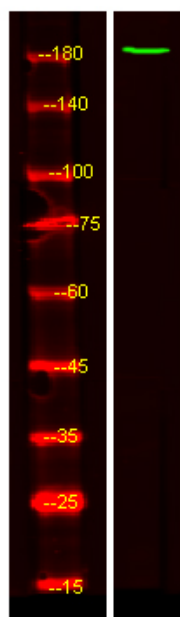
Usage suggestions

This product can be used in immunological reaction related experiments. For more information, please consult technical personnel.

Products Images



Immunohistochemistry analysis of paraffin-embedded human breast carcinoma tissue, using ZMYM4 Antibody. The picture on the right is blocked with the synthesized peptide.



Western Blot analysis of HEK293 lysis, using primary antibody at 1:1000 dilution. Secondary antibody(catalog#:RS23920) was diluted at 1:10000